



# REKONSTRUKCE ŽST. LETOHRAD

## UPGRADING OF THE LETOHRAD RAILWAY STATION

### Diplomová práce (Master's thesis)

Autor práce (Author):

Bc. Erik Dušek

Vedoucí práce (Supervisor):

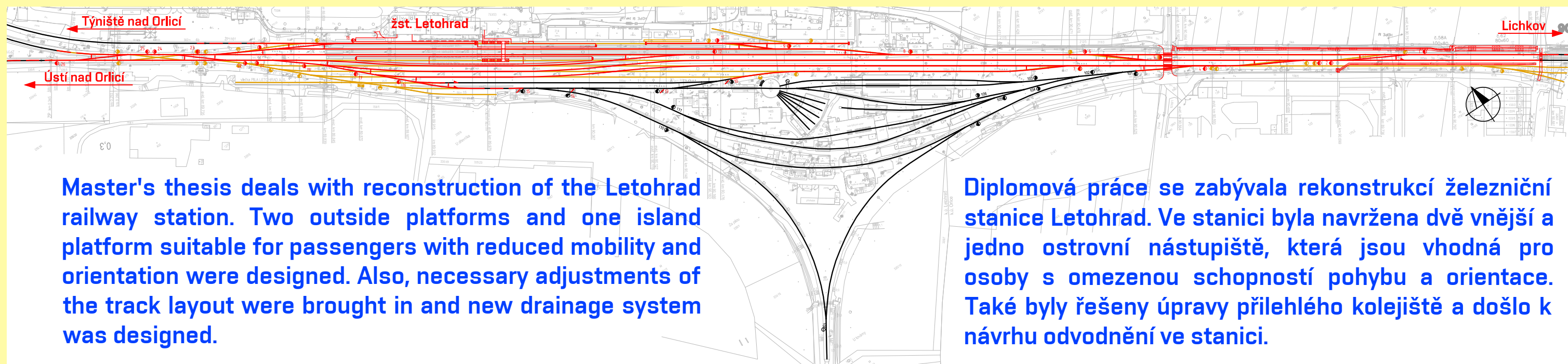
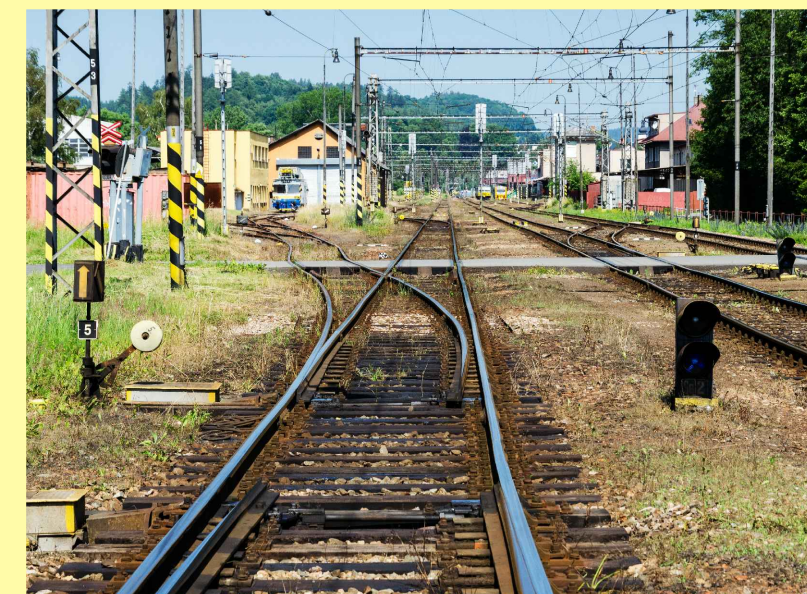
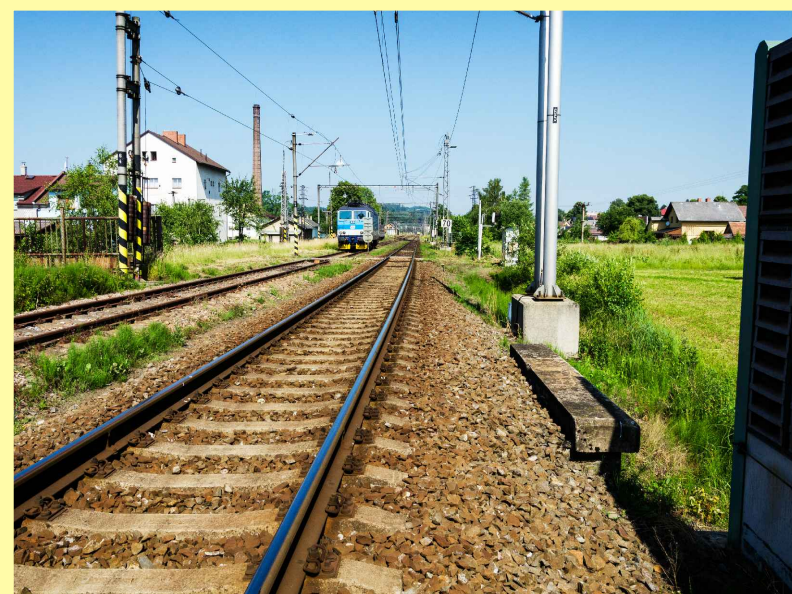
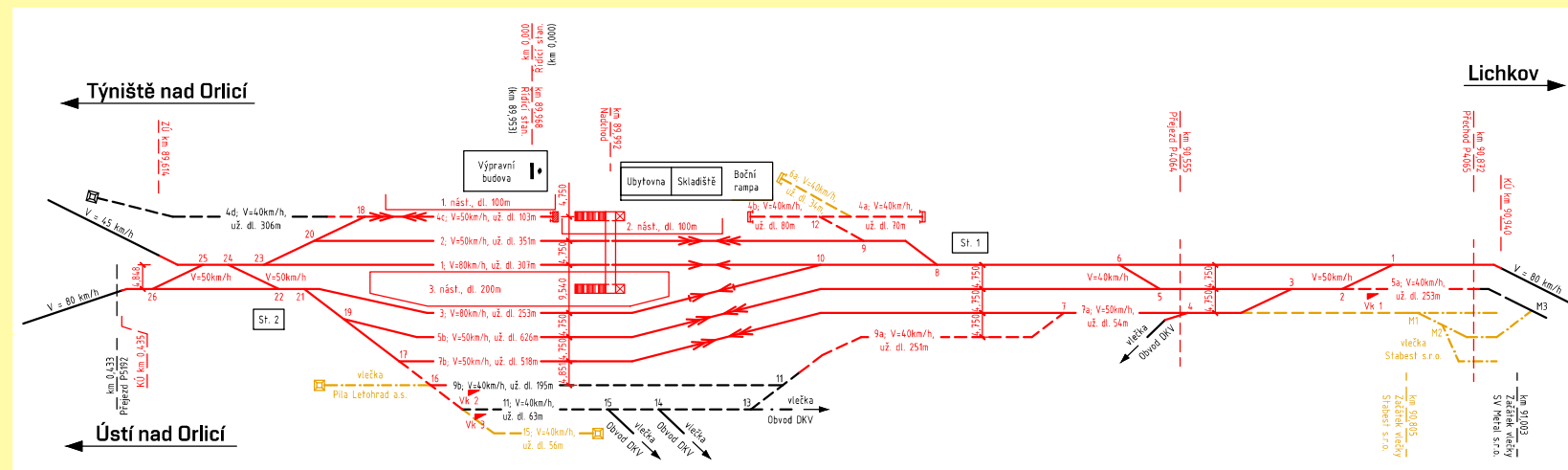
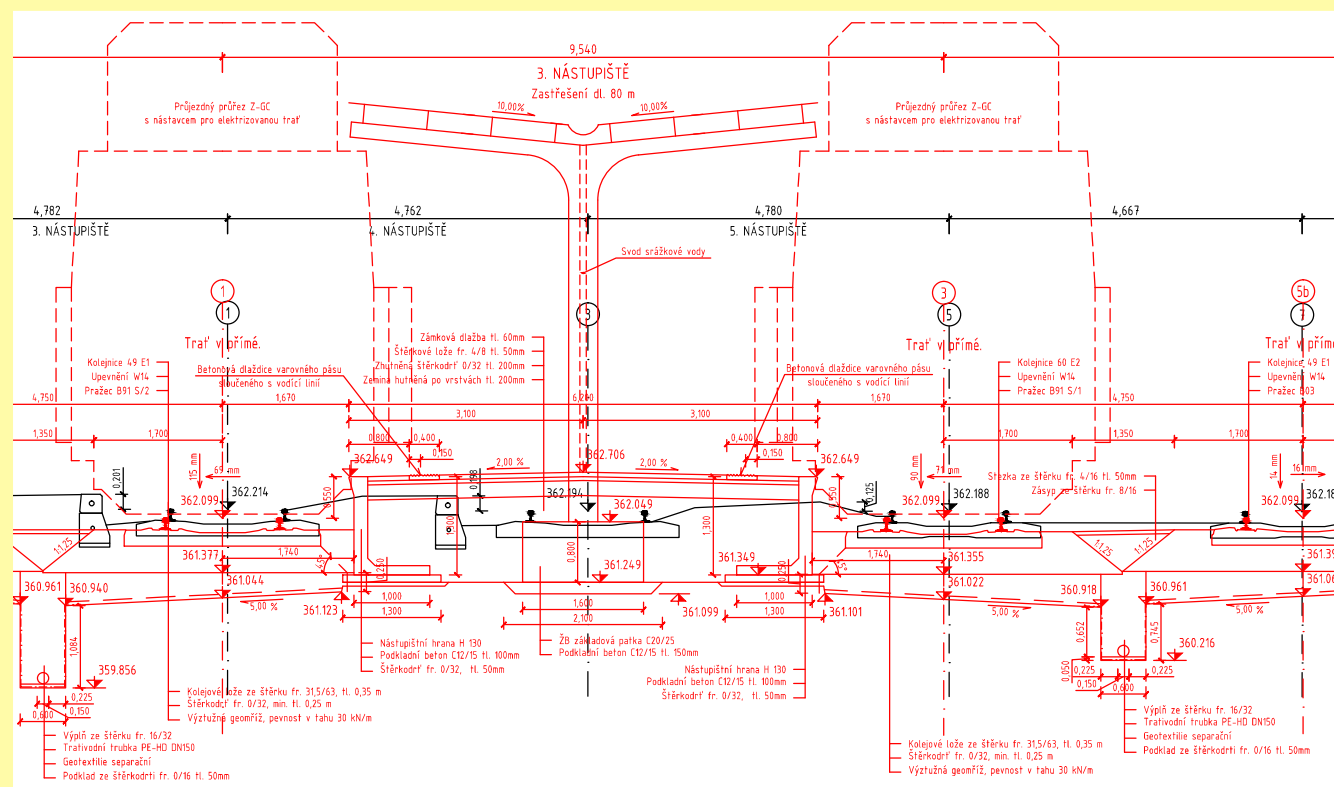
Ing. Miroslava Hruzíková, Ph.D.

Oponent práce (Opponent):

Ing. Radim Wrana

Datum SZZ (State examination date):

31. 1. 2017



Master's thesis deals with reconstruction of the Letohrad railway station. Two outside platforms and one island platform suitable for passengers with reduced mobility and orientation were designed. Also, necessary adjustments of the track layout were brought in and new drainage system was designed.

Diplomová práce se zabývala rekonstrukcí železniční stanice Letohrad. Ve stanici byla navržena dvě vnější a jedno ostrovní nástupiště, která jsou vhodná pro osoby s omezenou schopností pohybu a orientace. Také byly řešeny úpravy přilehlého kolejiště a došlo k návrhu odvodnění ve stanici.